

btexx Portal Suite 2012

Intelligent Enterprise Portals Based on SAP NetWeaver!

btexx Portal Suite 2012

- 100% SAP NetWeaver standard
- Innovative complete solution
- Extremely simple operation
- SAP NetWeaver 7.3 compatible
- SAP certified



The Integrated Complete Solution for Your SAP NetWeaver Enterprise Portal

btexx Portal Suite 2012 is the leading information management platform for the SAP NetWeaver Portal. Four optimally integrated solutions – Web Content Management, collaboration, document management and company searches – for intelligent enterprise portals.



SAP Special Expertise Partner:
 SAP NetWeaver Application Server
 SAP NetWeaver Process Integration
 SAP Business Process Management
 SAP NetWeaver IDM

Enterprise Portals That Both Users and Portal Operators Enjoy Working with

btexx Portal Suite 2012 makes working in the SAP Enterprise Portal even more efficient. Use is extremely simple and convenient for portal end users. And portal operators get a highly-integrated management platform for the SAP NetWeaver Portal in return. The solution is 100% based on SAP NetWeaver Portal standards and is compatible with SAP NetWeaver 7.0 and 7.3. btexx Portal Suite 2012 comprises the four products btexx easy WCM, btexx documentManager, btexx universalSearch and btexx collaborationManager. The products can be used together or individually in heterogeneous portal scenarios.

btexx Portal Suite 2012

Expand the Functionality of Your Portal with Solutions for Web Content Management, Document Management, Searches and Collaboration.

btexx easyWCM

Web Content Management Directly Within the Enterprise Portal

A key factor in the success of modern intranets, Web sites or service portals is sophisticated Web Content Management. This is only possible if editors have access to intuitive tools and technologies that enable them to easily create dynamic content.



Figure: btexx easyWCM – view in editor mode

Simple for Users & Editors

With btexx easyWCM editors can easily create pages and content within the portal. They have an efficient tool for organizing content structures at their fingertips. Web content is conveniently entered with btexx easyWCM either directly within the context or locally from the editor's cockpit. Editors can optimize content for all types of output media, including mobile devices. btexx easyWCM also supports user-generated content and offers Enterprise 2.0 features such as rating, comments and even microblogging capabilities.

btexx documentManager

Intuitive Document Management for SAP Knowledge Management (KM)

btexx documentManager offers an environment similar to Windows Explorer with an intuitive and friendly UI for knowledge Management (KM) in the SAP Portal. The product provides a Web-based platform for sharing, editing and storing any type of document.

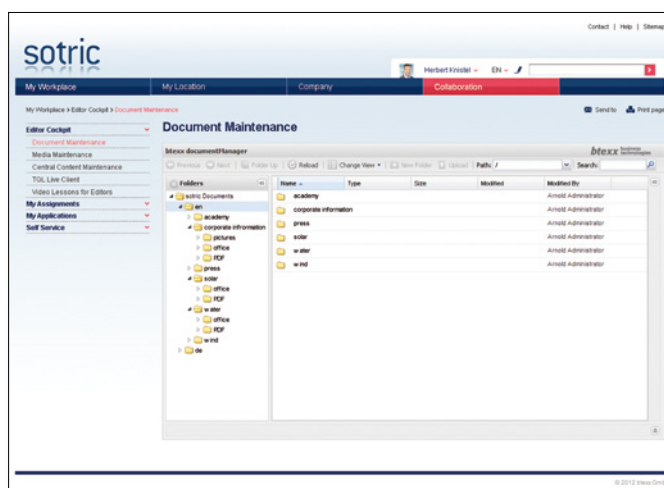


Figure: Simple document management in the SAP Portal

Plug & Play – Instant Added Value

Easy installation means that btexx documentManager is ready to use in the shortest amount of time; SAP Portal users will immediately notice the added value it delivers. With this modern Web-based user interface it is now possible to access and even easier to manage your existing document repositories. The tried and tested SAP KM features like versioning and subscription are at your disposal in less clicks and fewer browser windows with enhanced usability. This minimizes the amount of training needed and increases the acceptance and adaption of your SAP knowledge Management platform.

btexx universalSearch

Global Searches Across SAP and Non-SAP Systems

Google & Co. are the tools of choice when searching for information on the Web. Now you can offer the convenience of these tools in your enterprise portal with proven SAP NetWeaver Portal standards.



Figure: Searching for employees with btexx universalSearch

Extremely Flexible Thanks to an Open Architecture

btexx universalSearch delivers simplified searches for portal navigational items ("menu options"), documents in SAP Knowledge Management (KM) or for persons (UME).

In contrast to the NetWeaver Portal standard, you can create search interfaces completely in the desired portal design. btexx universalSearch also offers innovative, user-friendly features for modern company searches such as faceted navigation (also showing the number of hits) and Type Ahead Live Search.

btexx universalSearch's flexible connector architecture makes it possible to implement portal standards and connect other systems. Ready-to-use connectors are already available for Microsoft SharePoint, file storage (File Server) and SAP enterprise data search, for example.

btexx collaborationManager

Better Collaboration in the SAP NetWeaver Portal

Many companies still operate their intranet and application portal separately. The SAP NetWeaver Portal is used as a process and application portal, while Microsoft SharePoint is often used as an intranet platform. The consequence: Users have to deal with two different portals. This separation is unnatural for users and isn't practical in their everyday work situations.

btexx developed btexx collaborationManager to improve collaboration and communication in enterprise portals. btexx collaborationManager makes the separation of the systems invisible for users.

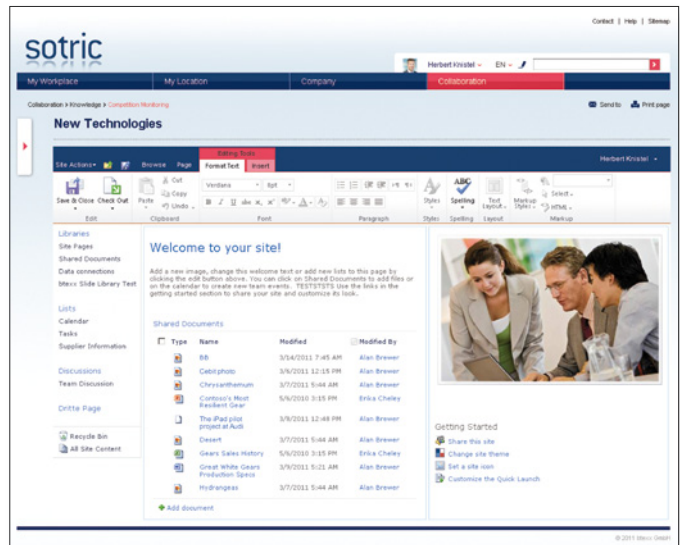


Figure: SharePoint integration in the sotric demo portal

Integration on Multiple Levels

btexx collaborationManager allows you to integrate Microsoft SharePoint in the SAP Portal with ease, while offering you a wide variety of design options. Teamsites, documents and even complete navigational structures can be flexibly integrated into the SAP Portal. This lets end users immediately begin working in an integrated enterprise portal.

More Information

Interested in Live Demos, Prices, License Fees or Trials?

Contact us. We'll help you find the right solution

btexx easyWCM

- Simplest way to manage Web content, videos, images and documents
- Multi-channel content: Centrally managed content can be made accessible to different employee groups based on roles
- Unlimited design possibilities for content and implementation of any design guidelines
- Social portal functionality, e.g. comments and rating
- Content formatting for a wide variety of output channels

btexx documentManager

- Modern user interface for SAP Knowledge Management (SAP KM)
- Intuitive operation with drag & drop to copy and move documents based on authorization
- Customizable software interface
- Integrated search (including "Search from here") that allows you to jump to the displayed document
- Mass up- and download of documents into/from the SAP Portal with one click

btexx universalSearch

- Ideally suited for SAP NetWeaver Portal searches in the intranet/extranet or on the Internet and for applications
- Unlimited design possibilities for search interfaces in the SAP NetWeaver Portal
- Unmatched simplicity for users thanks to faceted navigation, LiveSearch and filtering
- Role-based search results depending on user profiles and authorizations
- Comprehensive search behavior analysis options

btexx collaborationManager

- Simple enhancement of an existing SAP process portal by adding collaboration possibilities and Web 2.0 components
- Consolidation of "MS SharePoint islands" via the central SAP NetWeaver Portal
- Optimized use of SharePoint iViews for the end user thanks to special features like "safe content surfing"
- Integration of many SharePoint applications including meeting workspaces, Wikis, blogs, document lists, etc.
- No previous programming knowledge required for integration

Markus Marenbach
Sales Director

btexx GmbH
Rheinstrasse 4N
55116 Mainz, Germany

T +49 6131 62228-0
F +49 6131 62228-70
info@btexx.com
www.btexx.com

© 2012 btexx GmbH: The information provided within this text is non-binding and intended for informational purposes only. Products are subject to country-specific changes. The information contained within this publication is subject to change without notice. btexx GmbH assumes no liability for errors or incomplete information in this publication. btexx GmbH is only responsible for products and services as permitted in accordance with the provisions explicitly provided for within the agreements for the respective products and services. No further liability is assumed from the information contained within this publication.